

ATHARVA ROBOTICS CENTER

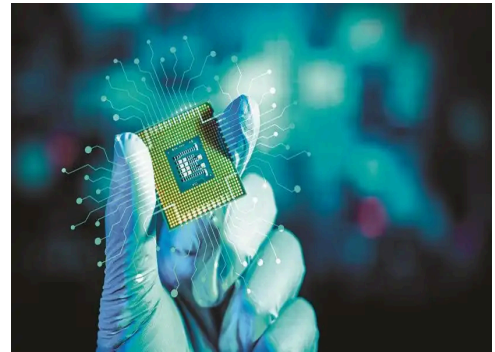
Daily News on Innovation & Technology

01st July, 2025

MiPhi launches India's first locally designed, manufactured enterprise SSDs

By Gulveen Aulakh, June 30, 2025

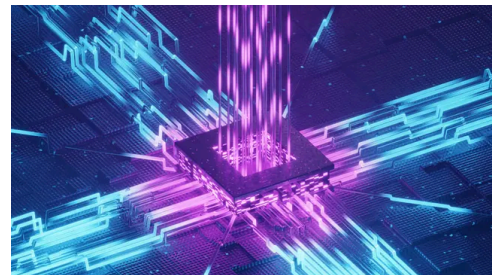
MiPhi Semiconductors Private Limited, a strategic joint venture between Micromax Informatics and Taiwan's Phison Technology, announced that it has begun designing and manufacturing enterprise-grade Solid State Drives (SSDs) in India—becoming the first homegrown brand to do so.



Quantum 'translator': A tiny silicon chip links microwaves and light like never before

By Rupendra Brahmabhatt, June 29, 2025

Imagine if future quantum computers could talk to each other across cities, countries, even continents without losing their spooky quantum connection.



Demos to duty: China's dice-rolling humanoid robot could serve tea, clean dishes

By Christopher McFadden, June 30, 2025

Chinese robotic company AI² Robotics has showcased its AlphaBot 2 humanoid robot to display its impressive self-learning skills at the Beyond Expo in China.



3D-printed resin 'shocks' scientists with rubber-like flex, plastic-like strength

By Atharva Gosavi, June 30, 2025

Researchers from the University of Texas at Austin have developed a fast and precise 3D printing method using resins that can seamlessly merge soft and hard properties into a single object using different light colors.



[From Gaganyaan to Artemis: Top 10 Upcoming Space Missions to Watch Out For](#)

By Sheetal Kumari, June 30, 2025

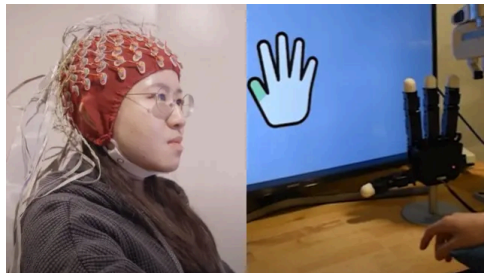
India's Gaganyaan mission, set to launch in early 2027, aims to send three astronauts into low-Earth orbit for up to seven days, marking a significant milestone in India's space exploration journey.



[World's first robotic hand bends fingers using nothing but human thought](#)

By Aamir Kholam, June 30, 2025

Assistive robotics and brain-computer interfaces (BCIs) are rapidly transforming how people with disabilities regain independence.



[Dual-light 3D printing technique enables seamless blending of flexible and rigid materials](#)

By University of Texas at Austin, June 30, 2025

Inspired by how nature blends toughness and flexibility, such as the rigid structure of bone surrounded by pliable cartilage, all with elegant and precise geometric properties, researchers at The University of Texas at Austin have developed a fast, precise new 3D printing method that seamlessly merges soft and hard properties into a single object using different colors of light.



News Articles

Vcs On AI Flight to Valley

Indian venture investors are setting up shop in San Francisco, the AI epicenter, as they chase cutting-edge development of the technology and aim to spot the next wave of AI trends. **Swathi Moorthy** checks in.

Multiple Indian venture capital companies, such as Elevation Capital and Peak XV, have set up shop at AI epicenter, San Francisco, in the US to tap into the booming industry. In addition to this, investors are spending more time in San Francisco or SF as it is called, as the pace of AI development grows unabated in the region.

Elevation Capital recently hired Capillary Technologies cofounder and former Meta executive Krishna Mehra, as the AI partner, with more people from the team spending significant time in the US. Peak XV has set up an office in SF and has hired Arnav Sahu, former Y Combinator principal, to drive investments. Blume Ventures' managing partner Sanjay Nath is spending time in San Francisco and India.

ET has also learnt that VC firm Z47 is looking to expand its presence in San Francisco, in the US. The email sent to the company did not elicit any response till the time of publishing.

Krishna Mehra, AI Partner, Elevation Capital, who is based in Palo Alto, quipped that it is now easier to meet a VC in the Valley than in Bengaluru. "I end up meeting more people from the investment community there," he says. "There are a few things driving this.

DUAL FACTOR
More action happening in US & a need to be near that action are key drivers

Mehra explained that this is a combination of more action happening in the US and the need to be closer to understand what is happening in the region and where the back is going. "There is a lot of cross border action happening as well, which being there helps to a certain extent," he added.

Two Bengaluru-based investors ET spoke to said that they are travelling to the US more often to understand how the technology is evolving. "Travelling there is eye-opening in terms of what is happening in AI and the kind of talent density that is available there," one of the investors said.

Anand Krishna, founder, Inkle, a US accounting and tax automation startup, said this is happening globally as well. For instance, he highlighted that a global accelerator, which had originally encouraged founders to start the company wherever they were, is now encouraged to move to the US. "Their original pitch was that build wherever you are, talent is everywhere and sit anywhere in the world. This was 10 years ago," Krishna said.

"This is because the early-stage AI startups have centralised itself to San Francisco city, which has become centre of gravity for startups and foundational model companies. This has eroded Silicon Valley's relative historical dominance over SF, as thousands moved to or launched in the city," he explained.

This includes



VC FIRMS, VALLEY INVESTORS

- | | |
|---|--------------------------------|
| Elevation Capital: Krishna Mehra | Nexus Venture Partners* |
| Peak XV: Arnav Sahu | • Abhishek Sharma |
| Blume Ventures: Sanjay Nath | • Amrut Rajkarne |
| | • Aniket Kamthe |
| | • Jishnu Bhattacharjee |
| | • Utkarsh Malhotra |

Source: LinkedIn; public announcements | *This structure is not new at Nexus Venture Partners

VALLEY BOUND

The trend is happening globally with a UK-based accelerator asking people to move to the US

OpenAI and Y Combinator companies that are in SF that have created a concentration of talent in the region

resulting in a vibrant AI ecosystem, attracting investors, startups and techies. "Now you will see entrepreneurs and investors all over the world making pilgrimages to SF every six to 12 months," Inkle's Krishna says.

WHAT ARE INVESTORS DOING IN THE US?

Indian investors have been investing aggressively in the AI space in recent times. With a lot of startups in the AI space moving to the US, it is also becoming important for investors to help them with the networks.

ET had earlier reported that a number of AI startups such as Smallest,

ai, and Compositio have moved to SF to tap into this ecosystem. Early this year, Sarvam AI, which is building an Indic foundational model, launched Sarvam Labs in the Bay Area in the US in March in LightSpeed office in Menlo Park, US.

Sateesh Andra, managing director, Endiya Partners, who has been spending 3-4 months a year in the US, said, "They (portfolio startups) need connections and networks. So, helping them becomes very important," he said. But he does not see himself spending more than that in the region.

Elevation Capital's Mehra said that in the last two years they have invested in 15-20 companies, compared to the norm of five or six before, primarily driven by AI. "There is a lot of potential to build category leading companies, some of them in India. But some of them are easier to do in the US. That is why founders are moving early, and the pool is much larger. This might change in five years," he said.

Source: The Economic Times Newspaper, 01-07-2025

Page No 14

Link: <https://drive.google.com/file/d/1UCdITF0WbuLPFlaOBabBIhefHUE2leMu/view>

Are AI Agents Here to Stay?

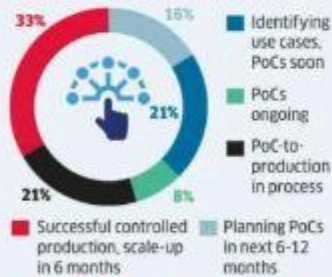
AI agents have been the talk of the town, pegged as the "next big thing" after Generative AI due to its ability to autonomously carry out tasks, marking a shift from language generation and analytics to execution. Nearly 62% of global enterprises are currently experimenting with AI agents, ranging from proof-of-concepts (PoC) to scaled pilots, as per a **Nasscom report**. However, the nature of these experiments is still largely

internal, focused on task-level automation with human oversight. Despite growing adoption and experimentation with agentic AI, reports also indicate limited maturity of the technology or the use cases, leading to high chances of failure of proofs-of-concept. Gartner expects four in 10 agentic AI projects to be canned by end of 2027. **Annapurna Roy** decodes the uptake of the technology and the possible hype around it.

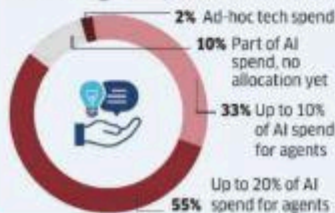
What is an AI agent?

Software programs that can sense, assess, act and learn to pursue complex goals with autonomy and predictability. **But...** current AI agents have technology, learnability and autonomy limitations, and work best with a human in the loop.

Enterprise AI agent adoption strategy, 2025



Potential spend allocation for AI agents, 2025



Who's adopting agentic AI?

62% of global enterprises are actively working on AI agents

HI-TECH COMPANIES AND THOSE WITH STRONG AI BUDGETS ARE MOVING FAST

- Over 25% in these categories reported PoC-to-production deployments
- Over 35% indicated successful controlled production and potential for scaling agents



MANUFACTURING AHEAD OF SERVICES

62% of manufacturing companies have initiated PoCs, moved to production, or started scaling up, vs around 57% of services companies

"AI agents represent the next evolution of enterprise AI, one that requires philosophical shifts in how we view work, intelligence, and autonomy. But to scale responsibly, trust, data readiness, and human oversight will be non-negotiable."

SANGEETA GUPTA, SVP & Chief Strategy Officer, Nasscom

Top perceived benefits

- Rapid information-to-intelligence for accelerated decision-making
- Better ability to respond to new business opportunities
- Reduction in failure rates from human-led process optimizations
- Adaptable, expertise-based organizational structures
- Freeing-up of workforce for higher-order work

Top challenges

- Data privacy & security risks
- Unknown risks of self-learning AI
- Inconsistent or no regulations
- Prohibitive infrastructure cost
- PoC-to-production failure

"Most agentic AI projects right now are early stage experiments or proof-of-concepts that are mostly driven by hype and are often misapplied... This can blind organizations to the real cost and complexity of deploying AI agents at scale, stalling projects from moving into production."

ANUSHREE VERMA, Senior Director Analyst, Gartner

Source: The Economic Times Newspaper, 01-07-2025

Page No 14

Link: <https://drive.google.com/file/d/1UCdITF0WbuLPFlaOBabBIhefHUE2leMu/view>



ATHARVA EDUCATIONAL TRUST'S
ATHARVA COLLEGE OF ENGINEERING
(Approved by AICTE, Recognized by Government of Maharashtra
& Affiliated to University of Mumbai - Estd. 1999 - 2000)
ISO 21001:2018 ISO 14001:2015 ISO 9001:2015
NAAC Accredited A+



ATHARVA
ROBOTICS CENTER

ATHARVA ROBOTICS CENTER

ATHARVA COLLEGE OF ENGINEERING, MALAD-MARVE ROAD, CHARKOP NAKA, MALAD (WEST), MUMBAI-400095